

**SIA** elite

**VISION**  
PROPERTIES PVT LTD  
*Adding Value to Life*

A PROJECT BY:



**FUTURE ACRES**  
REALTY | RELIABILITY | RESPONSIBILITY

# Highway PARIS

HIGHWAY FACING PROJECT @ SADASHIVPET  
HYDERABAD - MUMBAI NH 65

*An Address of Your Dreams...*

**SIA** elite

**VISION**  
PROPERTIES PVT LTD  
*Adding Value to Life*

A PROJECT BY:



**FUTURE ACRES**  
REALTY | RELIABILITY | RESPONSIBILITY

# 405, SVSS Nivas, Opp Gokul Theatre  
Czech Colony, Erragadda, Hyderabad - 18.  
E-mail: futureacres@gmail.com  
www.futureacres.in

SIA Graphics - ssa.graphics@gmail.com  
Call: 7036 88 9573, 9246 33 9573



For a distinct living one desires.  
**MADE FOR YOUR FAMILY.**



# INTEGRATED PREMIUM GATED COMMUNITY PROJECTS



## FUTURE ACRES

REALTY | RELIABILITY | RESPONSIBILITY

TELANGANA - ANDHRA PRADESH

[www.futureacres.in](http://www.futureacres.in)

**Future Acres** is a world class corporate firm rendering end to end real estate solutions. The futuristic organization is pursuing an aggressive growth agenda. **Future Acres** is invested in the mission of commissioning absolutely top end ventures with the power of redefining market dynamics. The company is in the process of shaping a host of milestone projects replete with best in class amenities and facilities. Customer-centricity, ethics based functionality, value for money projects, unmatched quality and fair play are the apt traits that describe **Future Acres**.

**Spear headed by the Astute Leadership of Mr LV CHoudary, CMD**

**Future Acres** is a pro-active realty corporate powered by the leadership of its **CMD - MR LV CHoudary**. He is a seasoned realtor backed by over 30 years of rich and varied experience. He is the name behind a number of prestigious realty projects of varied scales in a stellar career spanning almost three decades. Apart from astute leadership skills, he is also renowned for his skills in land procurement & development, legal compliance management, sales & BD and allied areas. Under his able leadership, **Future Acres** is poised to scale newer peaks.

# SUCCESSFULLY COMPLETED PROJECTS



HMDA APPROVED LAYOUT



HMDA APPROVED LAYOUT



DTCP APPROVED LAYOUT







# STRATEGIC LOCATION

## DISTANCE FROM KEY CITY POINTS:

200' HIGHWAY FACING VENTURE HYDERBAD - MUMBAI NH 65

Prop. Regional Ring Road	2 Kms
Sadasivpet Town	2 Kms
MRF Manufacturing Unit	5 Kms
WOXSEN Business School	5 Kms
IIT - Hyderabad	10 Kms
Mahindra Tractors	10 Kms
Pepsi Company	10 Kms
NIMZ Industrial SEZ	10 Kms
Mahindra Tractors	20 Kms

- 25 min. from GITAM University
- 25 min. from Toshiba Transmission
- 25 min. from United & Carisberg Breweries
- 30 min. from ORR Muthangi Junction Exit No.3



Sy. No's : 828, Sadasivpet Village & Mandal, Sangareddy District.

Sy. No's :98 & 100, Ishrithabad Village, Sadasivpet Mandal, Sangareddy District.





THE BEST LOCATION FOR BEAUTIFUL LIVING!



# Highway PARIS

@ SADASHIVPET

Get set to step into a truly experiential world replete with strategic location and futuristic facilities. SADASHIVPET TOWN - HIGHWAY PARIS. The latest and most prestigious residential layout from Future Acres is an ecosystem designed to upgrade residents to premium living. Located at SADASHIVPET TOWN, HYDERABAD - MUMBAI NH 65, SANGAREDDY DIST., the DTCP residential layout features prime villa plots devised to facilitate global lifestyles. The recently sanctioned near by Prop. Regional Ring Road (RRR) abutting NH 65 (Hyderabad - Mumbai Express Bypass, Sadasivept Junction, flanks the layout priming it for rapid appreciation. The vantage location of the layout is easily accessible from most commercial centers of Hyderabad including Cyberabad. The venture is in close vicinity to a host of landmarks including GITAM University, NIMZ SEZ, Regional Ring Road & ORR, and more. The location is also very close to important commercial destinations like Prop. RRR, Central Govt., NIMZ SEZ, Integrated Townships, upcoming Industrial SEZ etc. Brilliant design, elegant elevation, smart amenities and easy connectivity define the premium project.

Sy. No's : 828, Sadashivpet Village & Mandal, Sangareddy District.

Sy. No's :98 & 100, Ishrithabad Village, Sadashivpet Mandal, Sangareddy District.



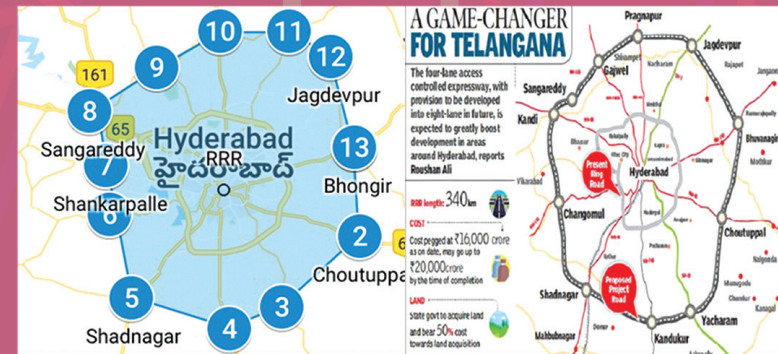
## PREMIUM VILLA PLOTS

@ SADASHIVPET

HIGHWAY FACING PROJECT  
HYDERABAD - MUMBAI NH 65







LOCATION DEVELOPEMENTS

## THE NEWLY PROPOSED REGIONAL RING ROAD TO BOOST HYDERABAD WEST CORRIDOR ESCALATING LAND PRICES

- ◆ Hyderabad - Mumbai NH 65 - 4 Lanes
- ◆ Very close to Sadashivpet Town
- ◆ Neary by Proposed Regional Ring Road (RRR)
- ◆ Sangareddy Town & Dist. Headquarters
- ◆ Indian Institute of Technology (IIT), Hyderabad
- ◆ Central Govt. NIMZ Approved Project (13,000 Acres)
- ◆ Very close to Pebs Pennar, MRF, Pepsi Co. & etc.,
- ◆ Near Aurobindo Pharma, KIRBY, Toshiba
- ◆ GITAM University
- ◆ ODF, Shankarpally
- ◆ Outer Ring Road (ORR)
- ◆ Maheshwara Medical College
- ◆ TRR Medical College & General Hospital
- ◆ BDL & ODF Townships
- ◆ Surrounded by many Luxury Villa Projects
- ◆ Surrounded by Reputed International Schools
- ◆ Surrounded by Engineering & Medical Colleges





## SCALING DIZZY HEIGHTS OF HAPPINESS



## AMENITIES :

- ❖ DTCP LAYOUT
- ❖ Gated Community Project
- ❖ Vaastu compliant
- ❖ All CC Roads
- ❖ Signage of Plot number and signage for all roads
- ❖ Footpaths for Entire Venture
- ❖ Electricity Connection
- ❖ All Roads with LED Street Lights
- ❖ Underground Drainage System
- ❖ Grand Entrance Arch
- ❖ Avenue Plantation
- ❖ Pollution Free Environment
- ❖ Landscaping Park
- ❖ Compound wall
- ❖ Water Pipeline
- ❖ Round the Clock Security
- ❖ Rainwater Harvesting Pits
- ❖ Bank Loan available



# INVEST

